

Paul Mason Associates



Off Maldon Road, Bradwell-On-Sea, Essex, CM0 7HX
Offers in excess of £1,200,000

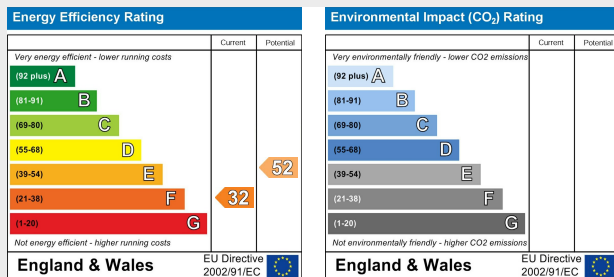
- Four Bedroom Detached Bungalow
- Exceptionally Presented Throughout
- Four Piece En-Suite to Bedroom One Plus Dressing Room
- En-Suite to Bedroom Two
- Open Plan Lounge/Kitchen/Diner
- Utility/Cloakroom
- Plot Approaching 3 acres
- Triple Garage and Extensive Driveway Parking
- Idyllic Countryside Setting
- Waterside Village Location

An outstanding four-bedroom detached bungalow occupying a superb wrap-around plot with fenced paddocks, extensive parking and a triple garage. Beautifully modernised and impeccably presented throughout, this exceptional home combines luxurious finishes with spacious, versatile accommodation.

The centrepiece of the home is the impressive open-plan lounge/kitchen/dining room, a superb family and entertaining space with a contemporary feel and an abundance of natural light. The high specification continues throughout, with stylish bathrooms, elegant décor and quality fixtures and fittings.

The principal bedroom provides a true sense of luxury, boasting dramatic floor-to-ceiling windows, a dressing room and a beautifully appointed four-piece en-suite bathroom. Bedroom two also enjoys its own en-suite, while the remaining bedrooms are served by a contemporary family bathroom. A separate cloakroom/utility room adds further convenience.

Outside, the property enjoys a large decorative paved patio seating area and generous surrounding grounds, with fenced paddocks offering excellent outdoor space and versatility. This is a striking and substantial home, perfectly blending modern living with a semi-rural lifestyle.



ACCOMODATION

GROUND FLOOR

Entrance Hall

4.0m x 3.7m (13'1" x 12'1")

Bedroom One

7.4m x 6.2m (24'3" x 20'4")

En-Suite

4.0m x 3.9m (13'1" x 12'9")

Bedroom Two

6.5m x 4.1m (21'3" x 13'5")

Dressing Room

3.9m x 2.1m (12'9" x 6'10")

En-Suite

2.7m x 1.3m (8'10" x 4'3")

Bedroom Three

4.0m x 3.6m (13'1" x 11'9")

Bedroom Four

4.0m x 2.4m (13'1" x 7'10")

Family Bathroom

2.4m x 2.2m (7'10" x 7'2")

Kitchen/Dining/Family Room

8.0m x 7.8m (26'2" x 25'7")

Inner Hallway

3.3m x 1.3m (10'9" x 4'3")

Utility/Cloakroom

3.5m x 1.8m (11'5" x 5'10")

Bedroom Five/Study

EXTERIOR

Triple Garage

Rear Garden

Frontage

Property Services

Gas - N/A

Electric - Mains

Water - Mains

Drainage - Mains

Heating - Electric

Local Authority -

Viewings

Strictly by appointment only
through the selling agent Paul
Mason Associates 01245
382555.

Important Notices

We wish to inform all prospective purchasers that we have prepared these particulars including text, photographs and measurements as a general guide. Room sizes should not be relied upon for

carpets and furnishings. We have not carried out a survey or tested the services, appliances and specific fittings. These particulars do not form part of a contract and must not be relied upon as statement or representation of fact.





Paul Mason Associates

35 The Street
Latchingdon
Chelmsford
Essex
CM3 6JP
T: 01621 742 310

Bruce House
17 The Street
Hatfield Peverel
Chelmsford
CM3 2DP
T: 01245 382 555

Sales | Lettings | Development | Investment

F: 01245 381257 E: info@paulmasonassociates.co.uk www.paulmasonassociates.co.uk

Paul Mason Associates Limited Registered in England Number - 6767946
Registered Office - Bruce House, The Street, Hatfield Peverel CM3 2DP





Paul Mason Associates

35 The Street
Latchingdon
Chelmsford
Essex
CM3 6JP

T: 01621 742 310

Bruce House
17 The Street
Hatfield Peverel
Chelmsford
CM3 2DP

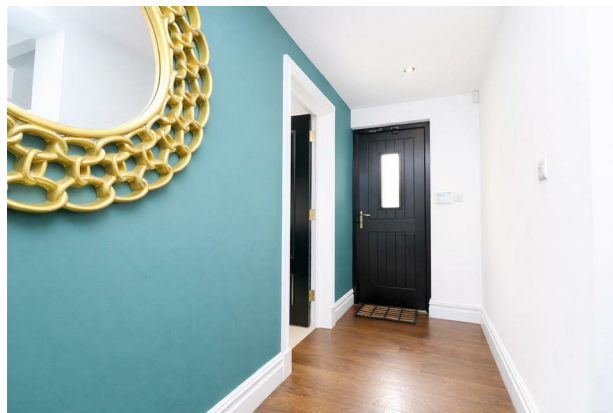
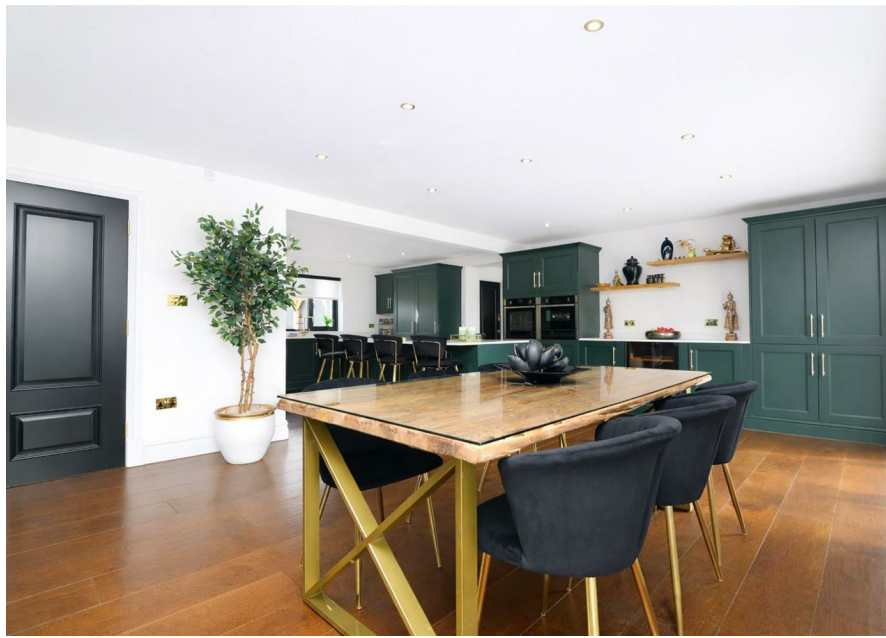
T: 01245 382 555

Sales | Lettings | Development | Investment

F: 01245 381257 E: info@paulmasonassociates.co.uk www.paulmasonassociates.co.uk

Paul Mason Associates Limited Registered in England Number - 6767946
Registered Office - Bruce House, The Street, Hatfield Peverel CM3 2DP





Paul Mason Associates

35 The Street
Latchingdon
Chelmsford
Essex
CM3 6JP
T: 01621 742 310

Bruce House
17 The Street
Hatfield Peverel
Chelmsford
CM3 2DP
T: 01245 382 555

Sales | Lettings | Development | Investment

F: 01245 381257 E: info@paulmasonassociates.co.uk www.paulmasonassociates.co.uk

Paul Mason Associates Limited Registered in England Number - 6767946
Registered Office - Bruce House, The Street, Hatfield Peverel CM3 2DP





Paul Mason Associates

35 The Street
Latchingdon
Chelmsford
Essex
CM3 6JP

T: 01621 742 310

Bruce House
17 The Street
Hatfield Peverel
Chelmsford
CM3 2DP

T: 01245 382 555

Sales | Lettings | Development | Investment

F: 01245 381257 E: info@paulmasonassociates.co.uk www.paulmasonassociates.co.uk

Paul Mason Associates Limited Registered in England Number - 6767946
Registered Office - Bruce House, The Street, Hatfield Peverel CM3 2DP

